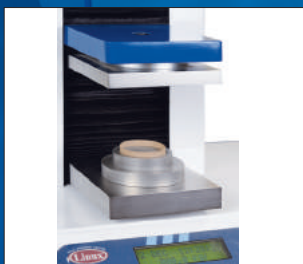




## Crush Testers & Sample Cutters





## LINUX CRUSH TESTERS

Linux range of Crush Testers are designed for performing Ring Crush Test (RCT), Edge Crush Test (ECT), Flat Crush Test (FCT), Pin Adhesive Test (PAT), Concora Medium Test (CMT), Corrugated Crush Test (CCT) and other general compression tests, on a variety of materials like paper, paperboard, etc.

These multi-functional equipments incorporate high accurate load cell and precise ball screw, which drives the compression platen steadily along the guide track to compress the specimen.

**Applications:** Paper | Paper Board | Corrugated Board | Duplex Cartons

### Specifications:

- Measuring range (Optional): 100, 200 & 500 kgf
- Measuring Unit : kgf, lbf & N
- Least count : 0.1 kgf
- Accuracy :  $\pm 1\%$  of reading
- Test speed : 12.7 mm/min (changeable)
- Location Speed : 180mm/min
- Platen Size : 125 X 125mm
- Space between compression plate : 200mm
- Platen Parallelism :  $\pm 0.05$ mm
- **Supplied with attachments for testing Ring Crush, Edge Crush. Other attachments at extra cost.**
- **Power :** 0.4kw, 220 VAC, 50Hz Single Phase.

### Standards:

Conforming to various National and International Standards

- **RCT** : TAPPI T 822, DIN 53134, ISO 12192, SCAN P34, APPITA/AS 1301.407s
- **ECT** : TAPPI T 811, TAPPI T 823, TAPPI T 838, TAPPI T 839, FEFCO TM 8, ISO 3037, ISO 13821, DIN 53149, SCAN P33, APPITA/AS 1301.444s
- **FCT** : TAPPI T 825, FEFCO TM 6, ISO 3035, SCAN P32, EN 23035, PPITA/AS 1301.429s
- **PAT** : TAPPI T 821, FEFCO TM 11, IS4006(Part1) APPITA/AS 1301.430
- **CMT** : TAPPI T 809, DIN 53134, ISO 7263, SCAN P27, APPITA/AS 1301.434s
- **CCT** : TAPPI T 843, SCAN P42

## Crush Tester (Micro Digital)

### Model : CRT/MD

#### Features

- Single push button operates automatic test cycle.
- A large LCD Display shows the test result.
- Auto Calibration in 5 simple steps.
- Overload protection (Preset)

#### Dimensions: ( D X H X W)

440 X 695 X 550 mm

**Net Weight:** 80 kgs

**Gross Weight:** 130 kgs





## Crush Tester (Micro Print)

**Model : CRT/MP**

### Features

- Single push button operates automatic test cycle.
- Printer port (25 pin female) facility to generate printed report (Dot Matrix printer to be provided by the user).
- A group of 12 tests can be performed for report.
- Accept or reject validation.
- Average of test results on the report.
- Programmable User Name, Product Name, Vender/ Customer Name, Codes, Lot Number etc.
- Date & time stamping.
- Auto Calibration in 5 simple steps.
- Overload protection (Preset).

**Dimensions: ( D X H X W)**

440 X 695 X 550 mm

**Net Weight:** 80 kgs

**Gross Weight:** 130 kgs

## Crush Tester (Micro PC)

**Model : CRT/MPC**

### Features

- The machine has microprocessor based controller, capable of highly accurate precise load measurements and rapid data acquisition.
- When test stops the platen returns up automatically.
- RS 232 Port with Software, to transfer data to computer (Computer to with provided by user)
- Windows based Software
- A group of 12 test can be performed for report.
- Data management is easy. Users can create their own specific identification numbers and view data at any time. Stored data can be re-displayed or printed as a table, histogram, or a control chart.
- Accept or reject validation.
- Average of test results on report.
- Programmable User Name, Product Name, vender/ Customer Name, Codes, Lot Number etc.
- Auto Calibration in 5 simple steps.
- Overload protection (Preset)

### Software:

The software program for Crush Tester is auto installable. Once the Test Configuration menu has been programmed, Start button is pressed, initiating the test. The results of the test are displayed on the PC in real time. They can then be saved and/or printed for later use.



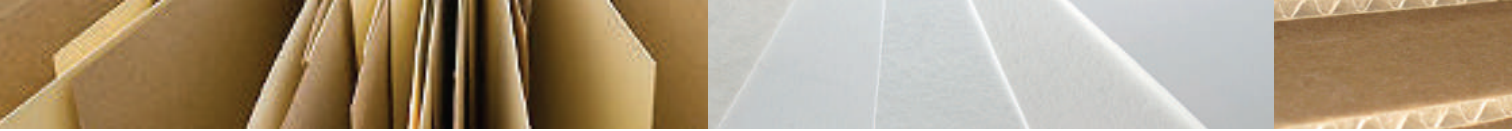
**Dimensions: ( D X H X W)**

440 X 695 X 550 mm

**Net Weight:** 80 kgs

**Gross Weight:** 130 kgs





**Dimensions: ( D X H X W )**  
475 X 695 X 675 mm

**Net Weight: 90 kgs**  
**Gross Weight: 140 kgs**

## Crush Tester (Micro Touch Screen PC)

### Model : CRT/MTPC

#### Features

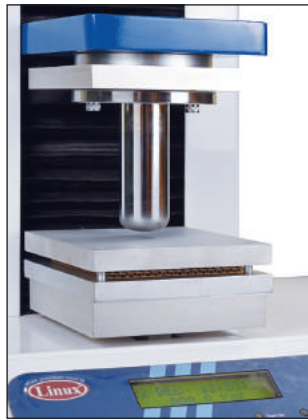
- The machine is microprocessor capable of highly accurate precise load measurements and rapid data acquisition.
- Rugged Computer Hardware with Touchscreen Monitor
- LCD touch flat panel monitor for easy viewing.
- When test stops the platen returns up automatically.
- A group of 12 test can be performed for report.
- Data management is easy. Users can create their own specific identification numbers and view data at any time. Stored data can be re-displayed or printed as a table, histogram, or a control chart.
- Accept or reject validation.
- Average of test results on report.
- Programmable User Name, Product Name, vender/ Customer Name, Codes, Lot Number etc.
- Auto Calibration in 5 simple steps.
- Overload protection (Preset)

#### Software:

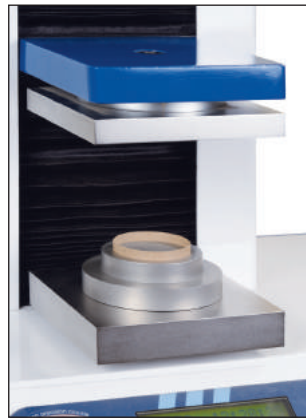
The software program for Crush Tester is auto installable. Once the Test Configuration menu has been programmed, Start button is pressed, initiating the test. The results of the test are displayed on the PC in real time. They can then be saved and/or printed for later use.



Pin Adhesion Test



Flat Crush Test



Ring Crush Test

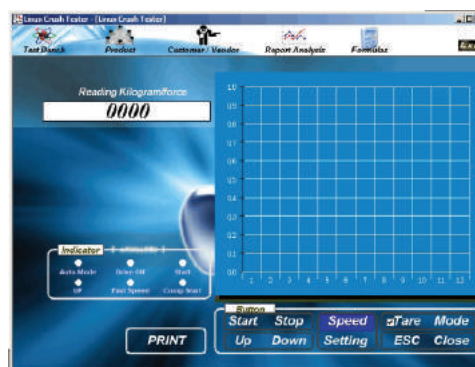


Edge Crush Test

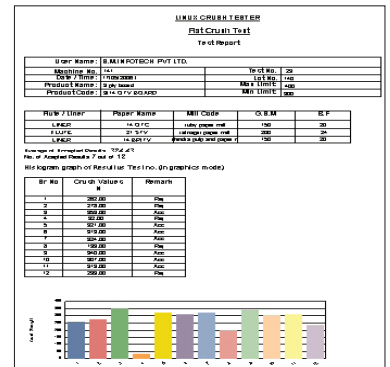
**Test Settings**

User Name: S.M.INFO TECH PVT LTD.  
Machine No: 141  
Date: 24/05/2006  
Time: 02:24:50 PM  
Lot No: 140  
Test Type: RCT  
Cust/Vend: Vendor  
Code: JRPPI/HNS  
Name: JRPPI/HNS (PVT LTD)  
Paper Code: J4 DFVTV C.O.M 150  
Paper Name: Kraft paper white B.F 20  
Heading Low: PR High PR  
Unit type: Kgf  
Save & Default

Sample test configuration screen



Sample test screen



Sample test report

## LINUX SAMPLE CUTTERS

Linux range of Sample Cutters are designed to cut precise samples, as required for various tests

### ECT Sample Cutter (Pneumatic)

**Model:** ECT/CUT/PN

The pneumatic cutter prepares accurate samples of corrugated board for ECT testing. The twin cut blades and the sampling-positioning device produce a clean and parallel cut sample. ECT Sample Cutters for cutting testing samples for Corrugated Cardboard to the size as per standards.

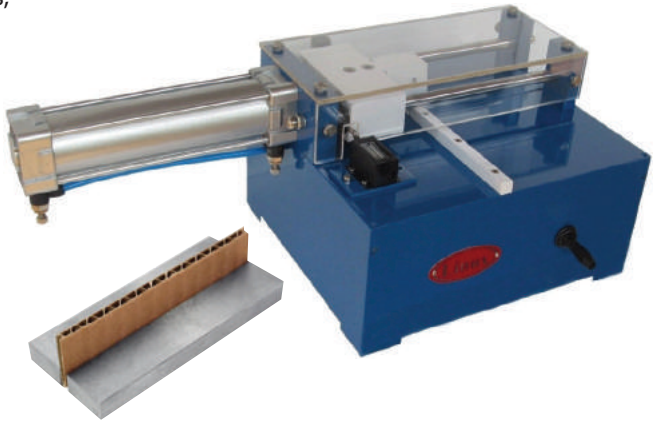
Precision slide system assures parallel edges and provide clean cut.

**Applications:** Corrugated Cardboard

**Specifications:** • Fixed width of cut 25 mm • Compressed air: 6-8 Bar

**Features:**

- High quality blade for precise cut
- Cuts single wall and double wall thickness up to 15mm
- Robust construction requires little or no maintenance
- Precision Bearings | 6 spare blades | Portable
- Pneumatically driven cutter head | Rugged design for many years of use
- A built-in counter checks the life of the knives
- Designed specifically to assure operator safety



**Dimensions: ( D X H X W )**

465 X 300 X 650 mm

**Net Weight:** 39 kgs

**Gross Weight:** 65 kgs

**Standards:**

FEFCOTM 8

### ECT/PAT Sample Cutter (Manual)

**Model:** ECT/CUT

Linux ECT/PAT Sample Cutter is designed to cut a variety of sample sizes for Edge Crush Tests (ECT) and Pin Adhesion Tests (PAT)

Precision Sample Cutter for cutting testing samples for Corrugated Cardboard to the sizes as per standards.

Precision slide system assures parallel edges and provide clean cut.

The instrument is portable and does not require any air or electric connection, allowing it to use it virtually anywhere.

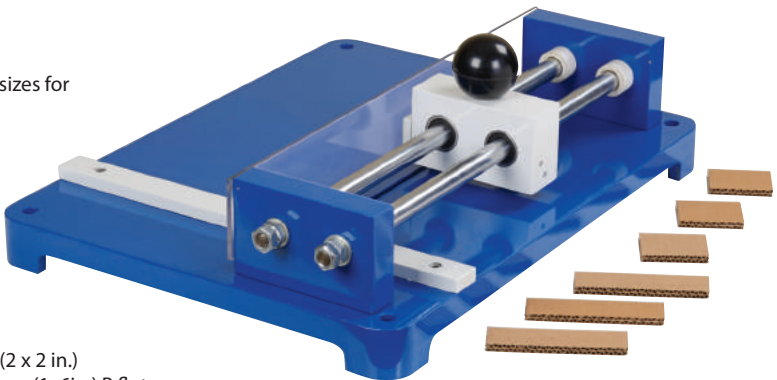
**Applications:** Corrugated Cardboard

**Specifications:**

- Cuts multiple sample sizes for Edge Crush Tests - Size : 5 x 5 cm (2 x 2 in.)
- Pin Adhesion Test Size 5 x 15.2cm (2x6 in.) A or C flutes 2.5 x 15.2cm (1x6in.) B flute

**Features:**

- High quality blade for precise cut
- Scale printed on body for accurate measurement
- Cuts single wall and double wall thickness up to 10mm
- Robust construction requires little or no maintenance
- Precision Bearings | 3 spare blades | Portable
- Designed specifically to assure operator safety
- Rugged design for many years of use



**Standards :** ECT Test

AS 1301.444s | ISO 3037

TAPPIT 811 | TAPPIT 823

TAPPI T 838 | TAPPI T 839

**PAT TEST**

AS 1301.430s | TAPPI T 821

FEFCO No. 11

**Dimensions: ( D X H X W )**

450 X 165 X 350 mm

**Net Weight:** 9.5 kgs

**Gross Weight:** 15 kgs

### Ring Crush Test Sample Cutter (Pneumatic)

**Model:** RCT/CUT/PN

Pneumatic Sample Cutter for cutting testing samples for paper to the sizes as per standards.

Die punch system assures parallel edges and provide clean cut.

The instrument is portable and it require air connection.

Linux can also manufacture custom size, if required.

**Applications:** Paper

**Specifications:** Cut Size 12.7 x 152 mm • Compressed air: 6-8 Bar

**Features:**

- Case hardened steel cutting edge ground to produce a lasting sharp and precise cutting edge
- Robust construction requires little or no maintenance
- Sample support tray | Transparent screen of security | Can be resharpened
- Portable | Precision Bearings | Designed specifically to assure operator
- Rugged design for many years of use

**Standards:** AS 1301.407, TAPPI 818 cm - 97, TAPPI 822 om - 89, ISO 12192



**Dimensions: ( D X H X W )**

500 X 290 X 460 mm

**Net Weight:** 33 kgs

**Gross Weight:** 50 kgs

## Ring Crush Test Sample Cutter (Manual)

### Model: RCT/DN/PC

Precision Sample Cutter for cutting testing samples for paper to the sizes as per standards.

Die punch system assures parallel edges and p clean cut.

The instrument is portable and does not required or electric connection, allowing it to use it virtue anywhere.

Linux can also manufacture custom sizes if required.

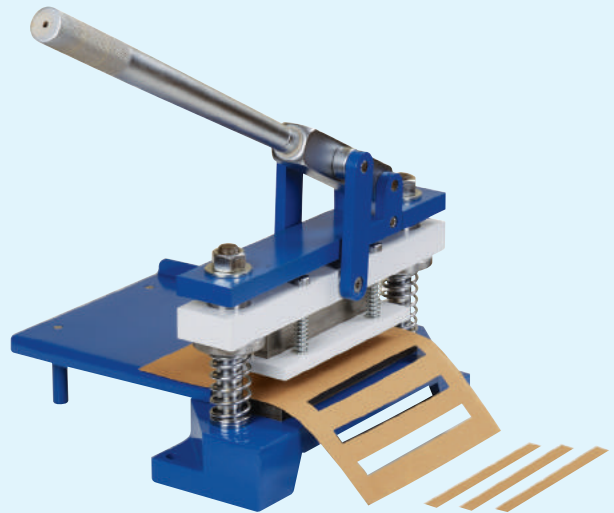
**Application:** Paper

**Specifications:** Cut Size: 12.7 x 152 mm

#### Features:

- Case hardened steel cutting edge ground to a lasting sharp and precise cutting edge
- Robust construction requires little or no maintenance
- Sample support tray | Can be bolted to a bench
- Can be resharpened | Precision Bearings
- Designed specifically to assure operator safety
- Rugged design for many years of use

**Standards:** AS 1301 .407 • TAPPI T 818 cm -97  
TAPPI 822 cm - 89 • ISO 121 92



**Dimensions: ( D X H X W )**  
500 X 400 X 300 mm

**Net Weight:** 15kgs  
**Gross Weight:** 20 kgs

## Flat Crush Test Sample Cutter (Manual)

### Model: FCT/CUT

The Flat Crush Test evaluates the resistance of flutes in corrugated board to a crushing force applied perpendicular to the surface of the board. Low flat crush values may reflect poor formation of the corrugations, substandard materials, or damage to the corrugations after they are formed.

Flat Crush Test Cutter which can cut through the corrugated structure, leaving clean cut edges at right angles to the faces. Linux can also manufacture custom sizes if required.

**Applications:** Corrugated fiberboard

**Specifications:** Sampling area: 64.5 cm<sup>2</sup> (or) 32.2 cm<sup>2</sup>

#### Features:

- Maximum sample thickness: 10 mm
- Robust construction requires little or no maintenance
- No deformation of the cutting edges
- Blades easy to change
- Cutting pad included in delivery • Portable
- 3 pin location points
- Designed specifically to assure operator safety
- Rugged design for many years of use

#### Standards:

- TAPPI T 82 • DIN P 23025
- SCAN P32 • ISO 3035

#### Dimensions:

150 X 150 X 150 mm

#### Weight:

- Net Weight: 3 kgs
- Gross Weight: 4 kgs



An ISO 9001:2008 Company

*Instrumental in Your Success*

## Linux Machines Incorporation

Plot No. 3, Ahad Industrial Complex, Near Bharat Gears Ltd.,  
Bholenath Nagar, P. O. Dawla, Mumbra, Thane - 400612  
Board Tel. No. : +91 88794 97458/68, 8879147554/56

Email: machines.linu@ gmail.com

www.testingequipments.com

www.linu@ machines.in